

TACT SWITCH

P/N:TSB36351



SPECIFICATIONS

Function: Momentary action
 Contact Arrangement: SPST, Normally Open
 Termination: SMD version

Mechanical

Actuation Force: 250 ± 50grams
 Life Expectancy: 30,000 Operations

Electrical

Contact Rating: 50mA @ 12V DC
 Dielectric Strength: 250V AC/50Hz for 1minute
 Contact Resistance: 100mΩ Max.
 Insulation Resistance: 100MΩ Min.
 Travel: 0.15 ± 0.07mm

Environmental

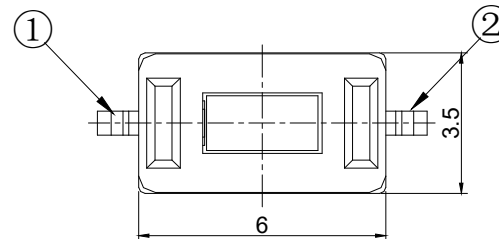
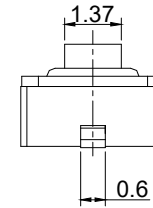
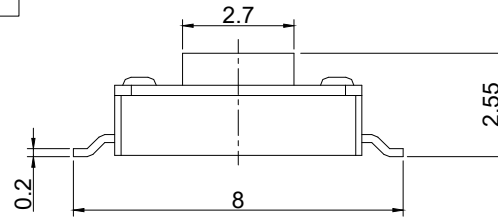
Operating Temperature: -25 ~ +70 °C
 Relative Humidity: (40 °C) ≤ 95%

Materials

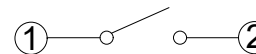
5.Stem: White PPA
 4.Cover: Ferrum with Copper and Tin
 3.Spring: Stainless Steel with Silver Cladding
 2.Holder: Black PPA
 1.Terminal: Phosphorus copper silver plating

Packaging

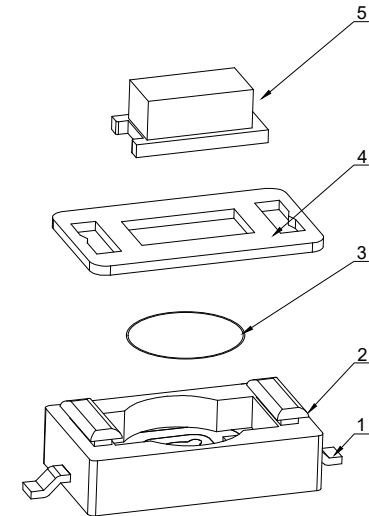
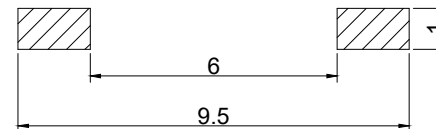
Bulk Package
 Inner Package: Reel
 Outer Package: Carton



CIRCUIT DIAGRAM



P.C.B. LAYOUT



KHON WNEZHOU KHAN ELECTRONIC

VERSION

KH14FE22E

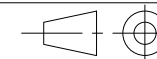
SCALE

1:1

SIZE

A4

PROJECTION



Dimensions are shown:mm(inches)

DESIGN

DRAWN

APPROVAL